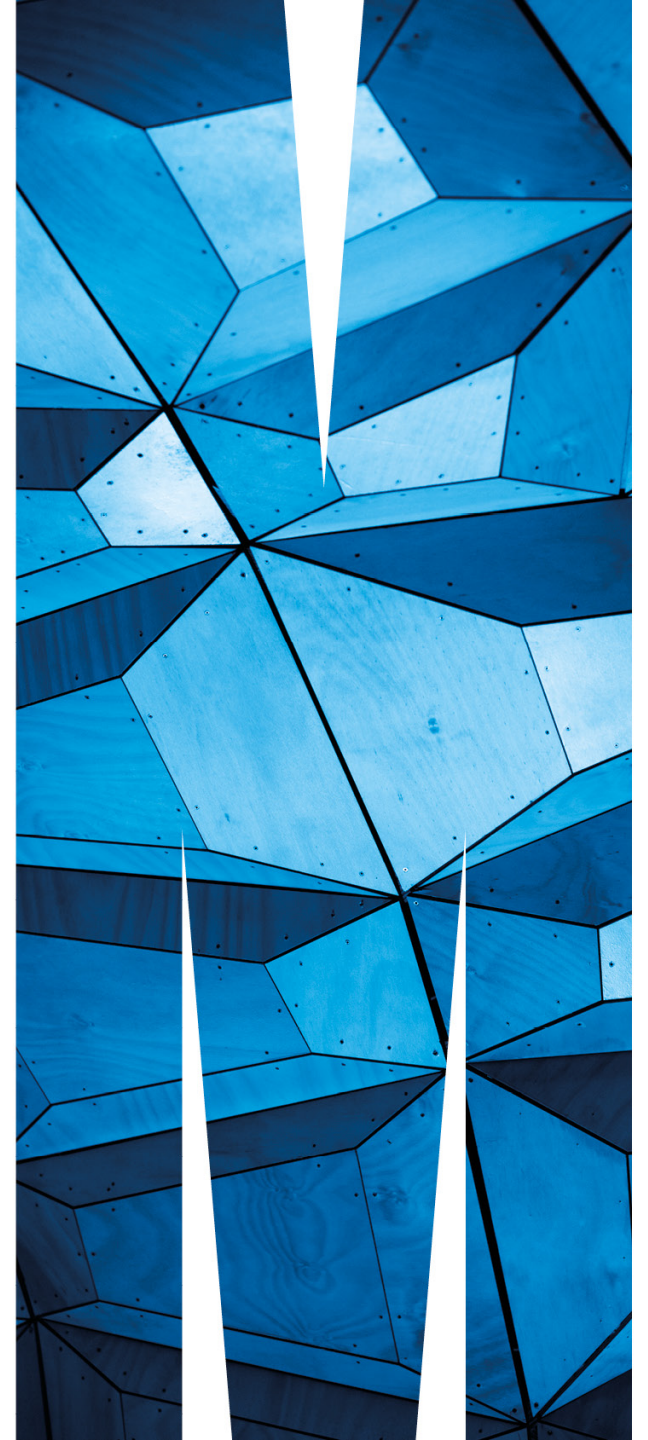




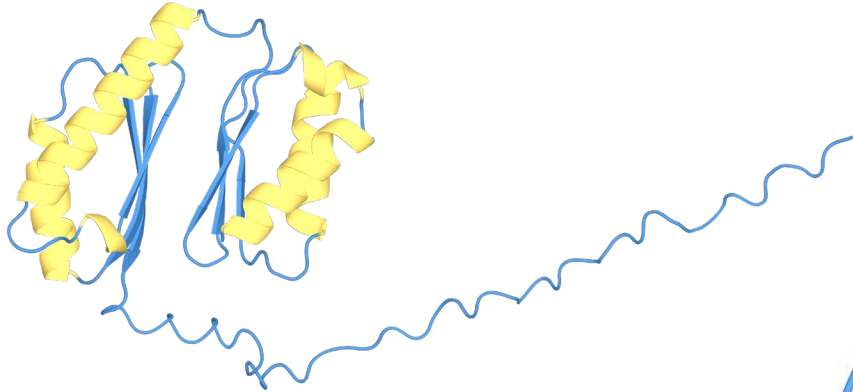
MONASH
University

Structural insights into the outer membrane stability factor BonA from *Acinetobacter baumannii* from CASP14

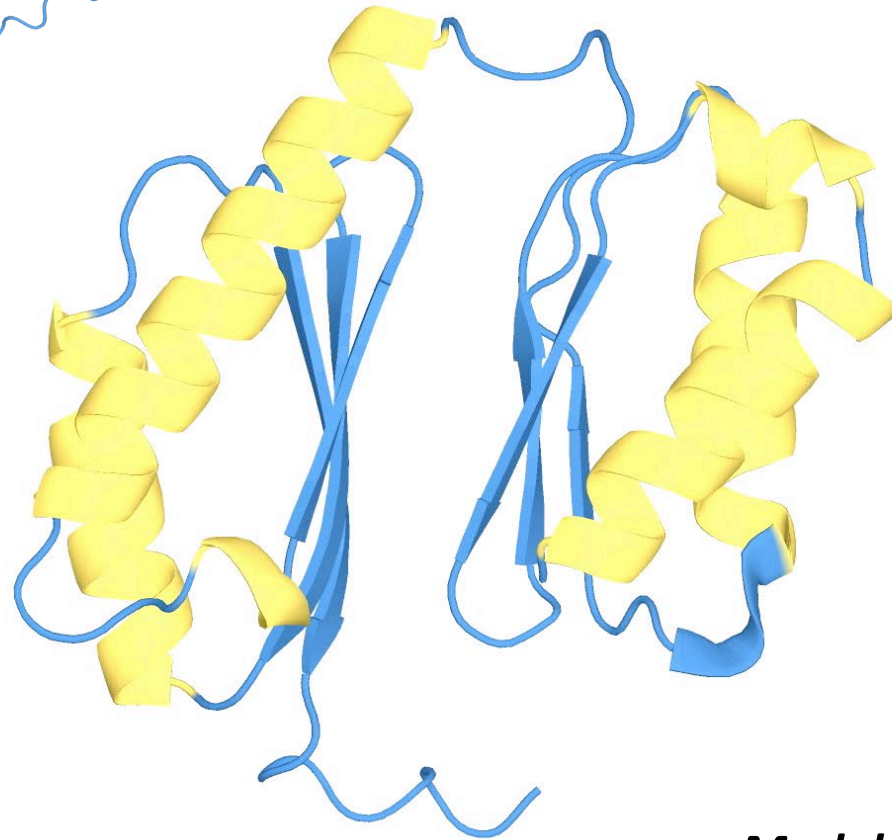
Dr. Rhys Grinter



BonA MODEL VS. CRYSTAL STRUCTURE



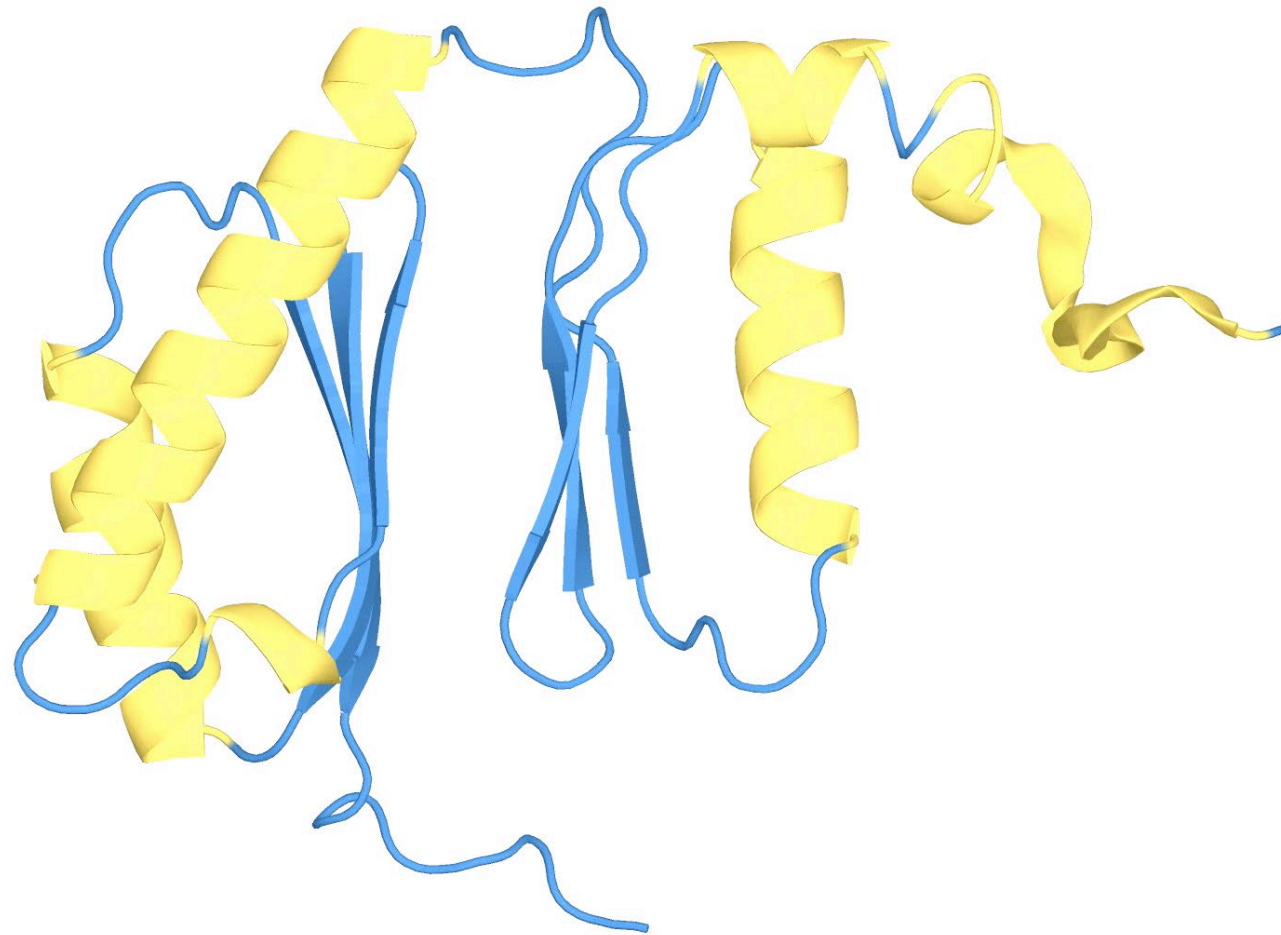
BonA CASP Model T1054



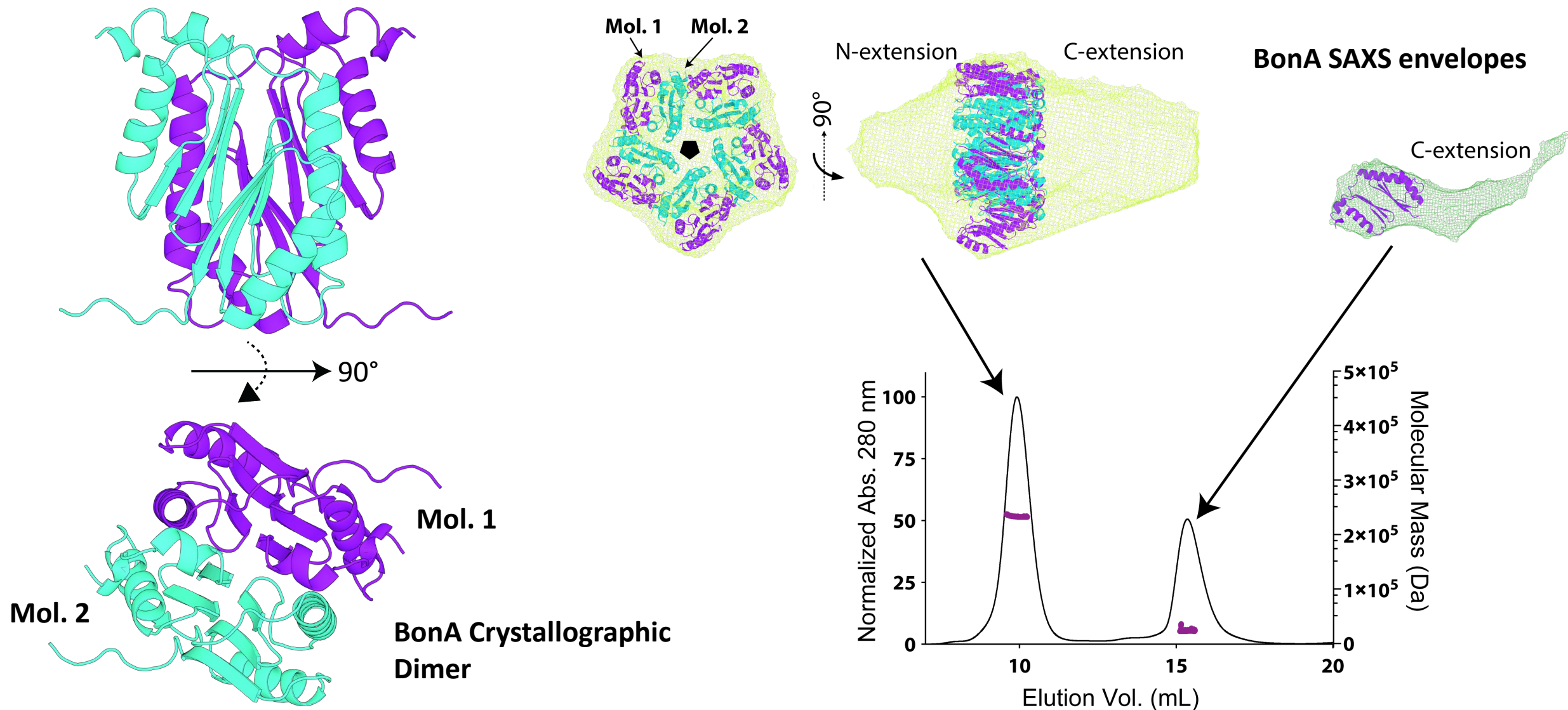
$C\alpha$ -RMSD AA46-192 = 0.425 Å

Model successful for molecular replacement!

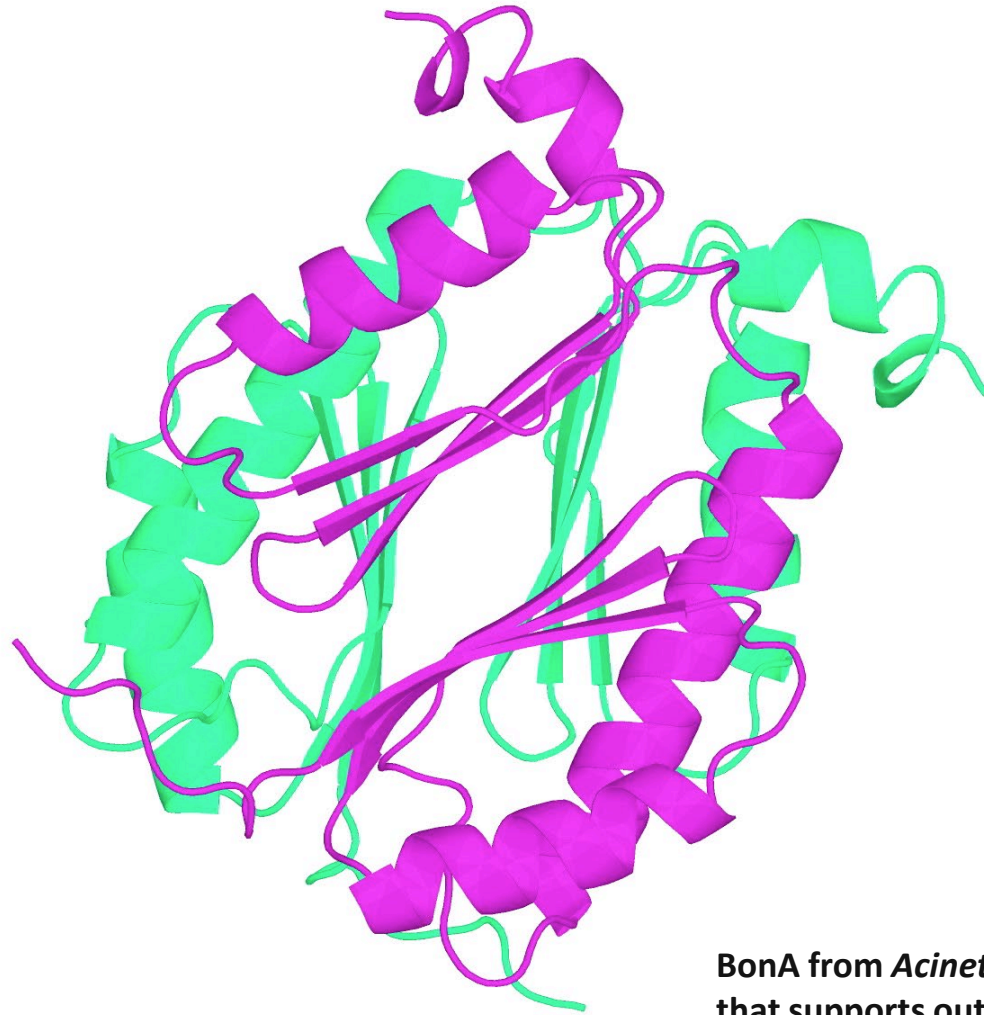
BonA MODEL VS. CRYSTAL STRUCTURE



BonA FORMS A DECAMER THAT SPONTANEOUSLY DISSOCIATES



CASP14 MODELS LIKELY REPRESENT MONOMERIC BonA



BonA from *Acinetobacter baumannii* forms a divisome-localized decamer that supports outer envelope function

Grinter et. al. BioRxiv