



H0957 – Analysis 4/20/18

Small heterogeneity
observed and corrected for
in SEC-SAXS



1:1 Complex

Sample: CASP Chicago209Sample			
Variable	Value	Error +/-	Units
Rg	21.8	1	Angstroms
Porod Exponent	4.0		Scale (2-4)
Mass SAXS	32	5	kDa
Max Dimension	71	3	Angstroms
Radius of Cross Section	18.4	1	Angstroms
Volume	54545	5,000	Cubic Angstroms
Real Space Rg	21.58	3	Angstroms

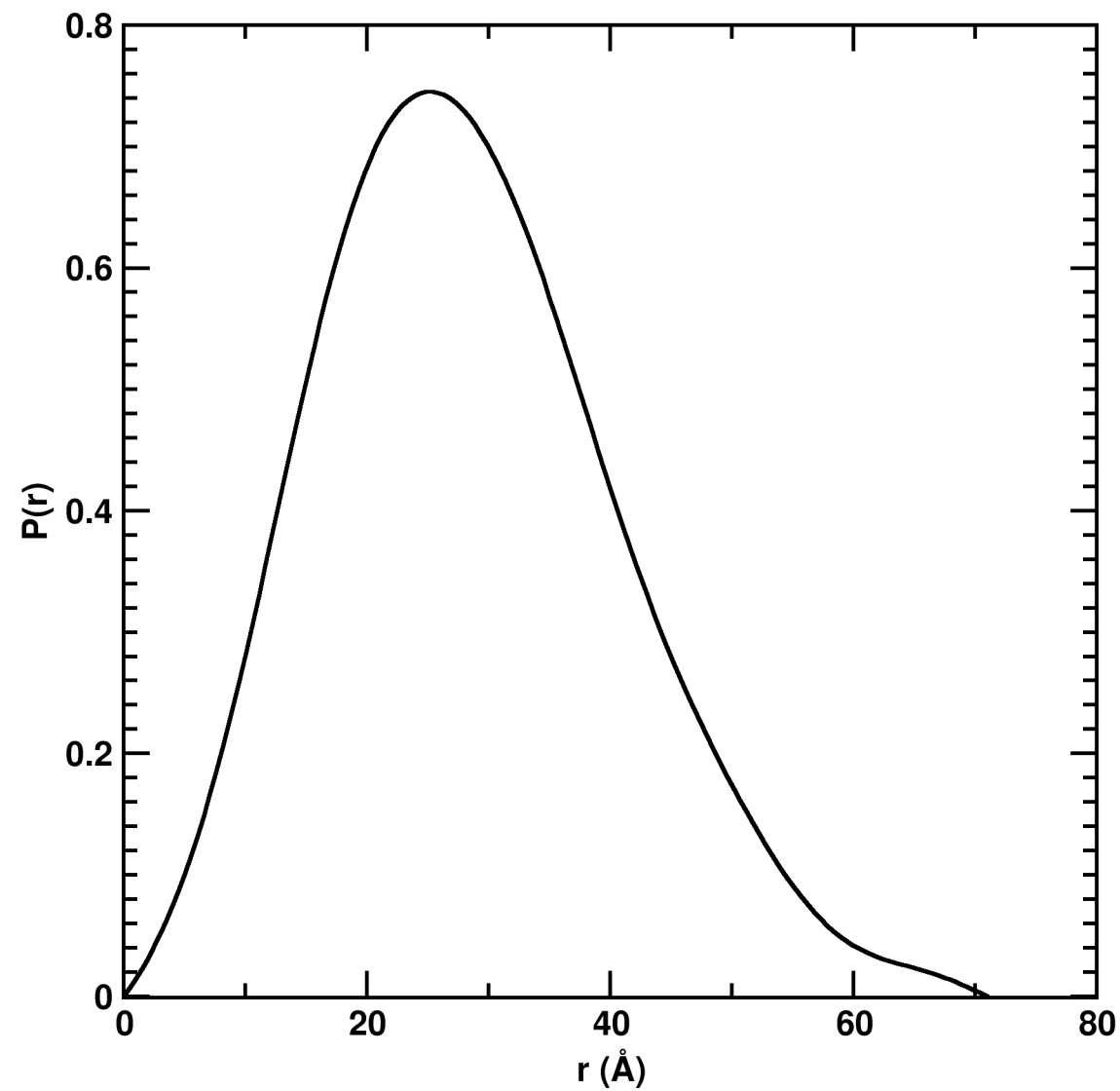
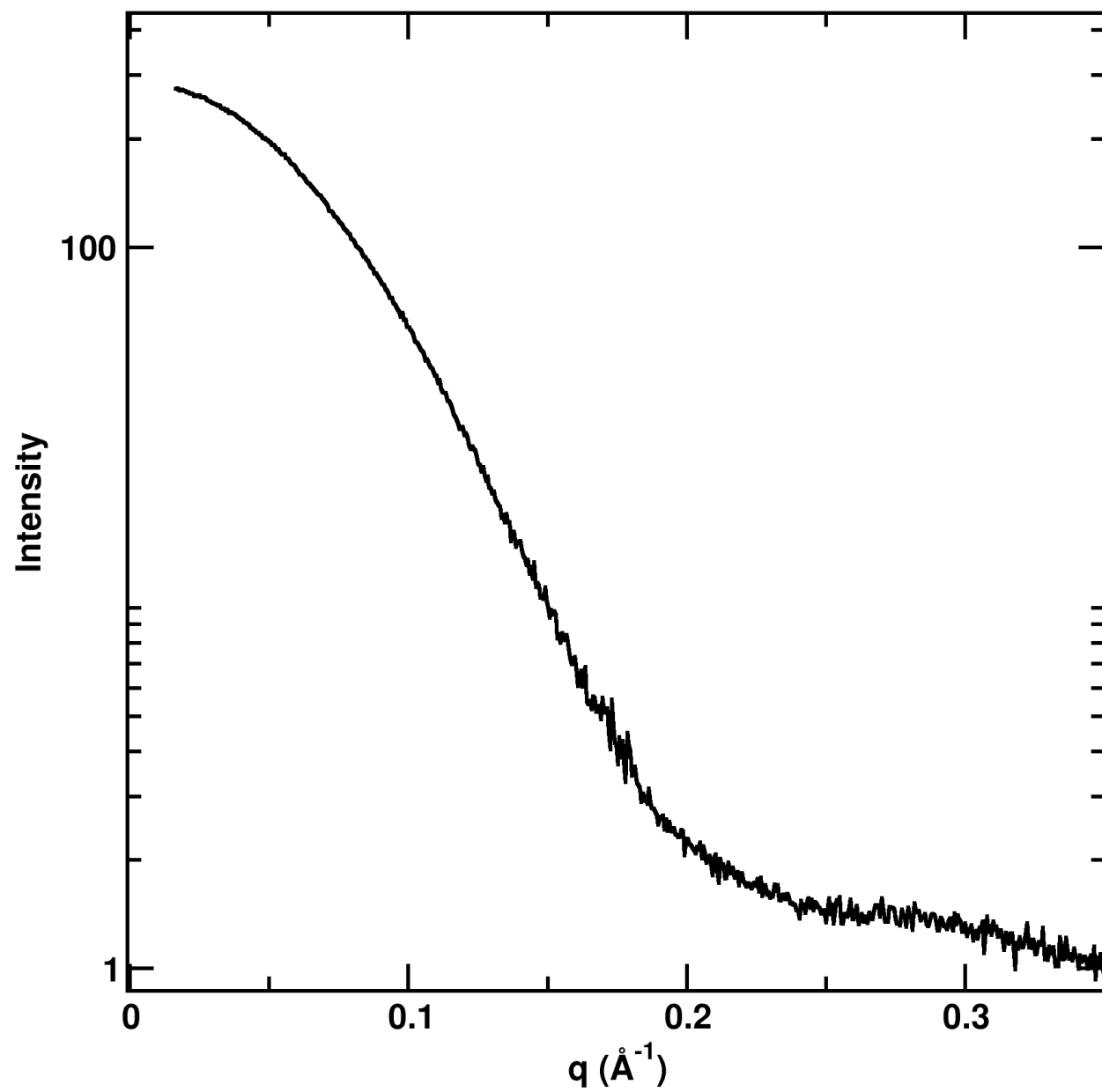
ChainA:

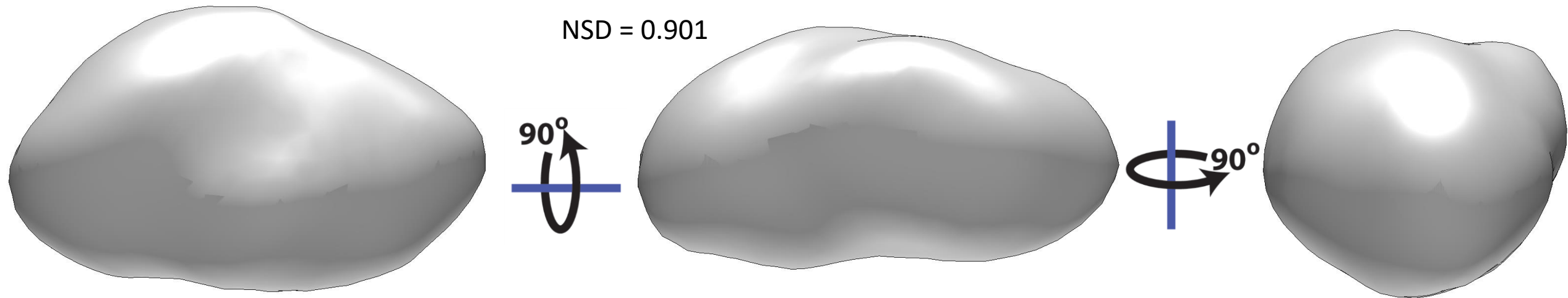
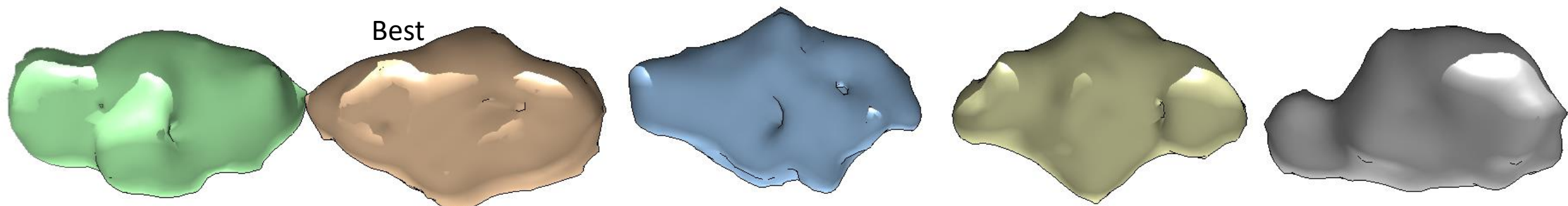
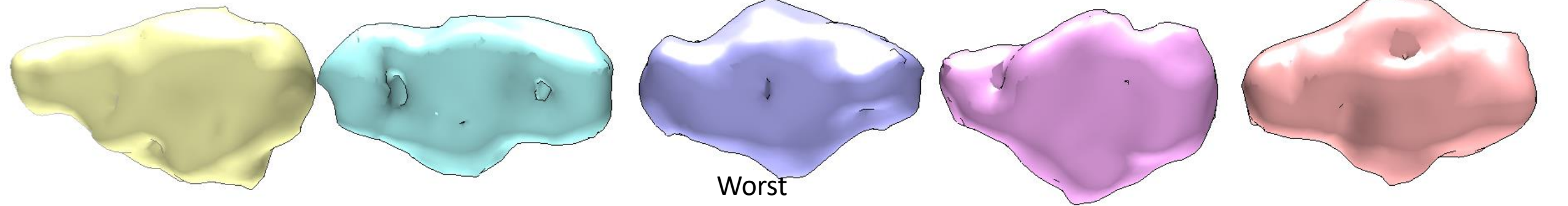
SNSFEVSSLPDANGKNHITAVKGD
AKIPVDKIELYMRGKASGDLDSLQAEYNSLKDARISSQKEFAKDPNN
AKRMEVLEKQIHNIERSQDMA
RVLEQAGIVNTASNNSMIMDKLLDSAQGATSANRKTSVVVSGPNGNVRIYATWTILPDG
TKRLSTVTGTGFK

ChainB:

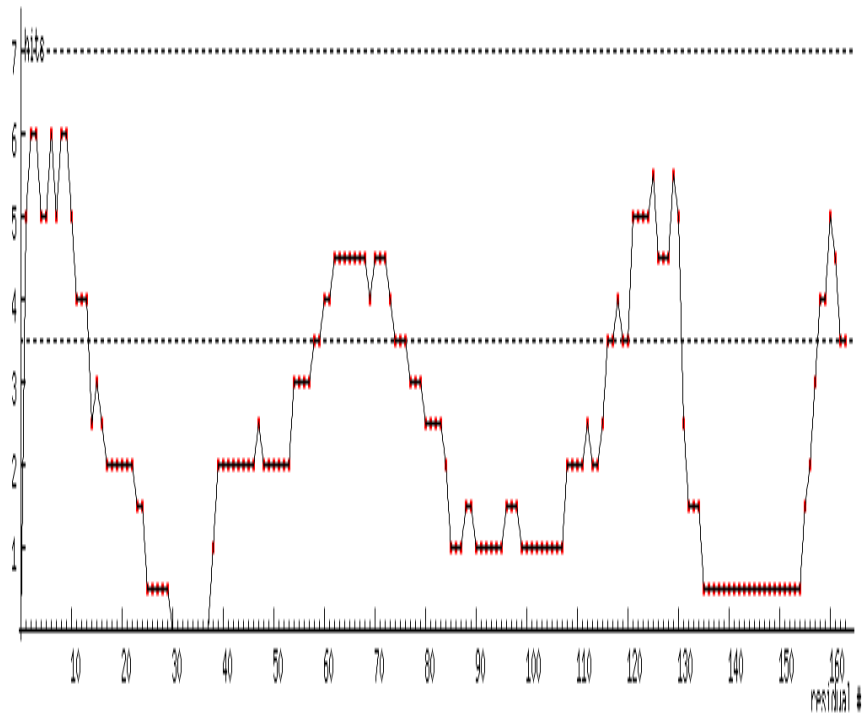
SNAMINVNSTAKDIEGLESYLANGYVEANSFNDPEDDALECLSNLLVKDSRGGLSFCKKILNSN
NIDGVFIKGSALNFKLLSEQWSYAFEYLT
SNADNITLAE LEKALFYFYCAKNETDPYPV PEGLFKKLMKRYEELKNDPD AKFYHLHET
YDDFSKAYPLNN

Total 36.4kDa



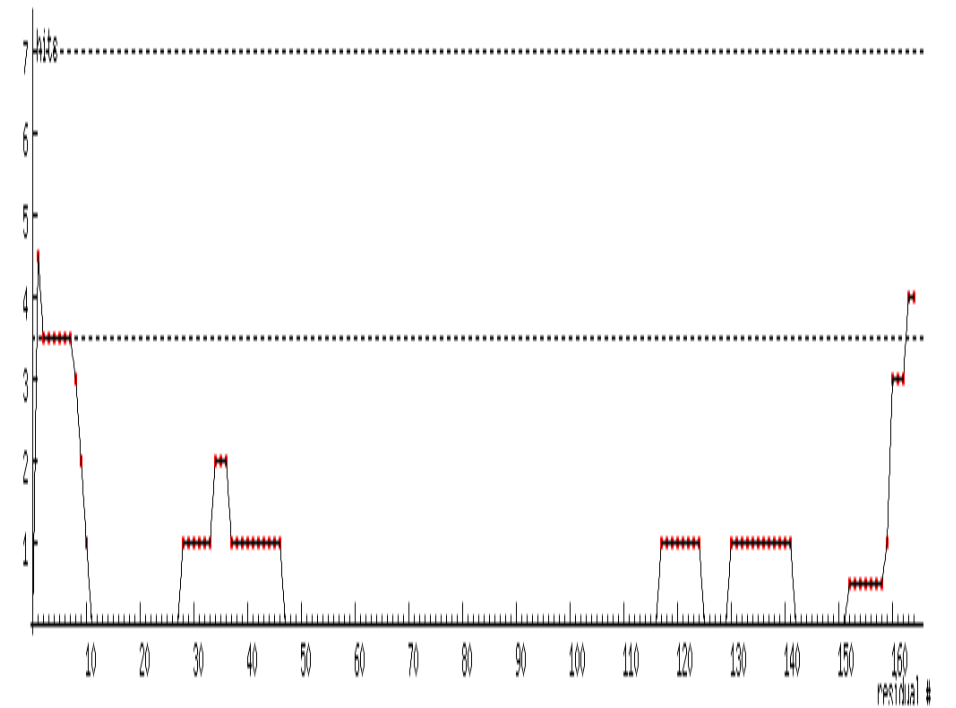


Chain A



First 15aa predicted disordered

Chain B



Quality Parameter	Compliance	Value	Expected
Multiple Concentrations in HT	Yes	2	3
SEC-SAXS	Yes		
Rg Real and Reciprical Agree	Yes	21.8 vs 21.58	
Dmax easy to define	Yes	69 - 72	
Low Flexibility	Yes	4	
Mass multiple of monomer	Close	32kDa	36kDa
Linear Guinier	Yes	21.8	

ChainA:

SNSFEVSSLPDANGKNHITAVKGDAKIPVDKIELYMRGKASGDLDSLQAEYNSLKDARISSQKEFAKDPNNAKRMEVLEKQIHNIERSQDMA
RVLEQAGIVNTASNNSMIMDKLLDSAQGATSANRKTSVVVSGPNGNVRIYATWTILPDGTRKRLSTVTGTGFK

ChainB:

SNAMINVNSTAKDIEGLESYLANGYVEANSFNDPEDDALECLSNLLVKDSRGGLSFCKKILNSNNIDGVFIKGSALNLLLLSEQWSYAFEYLT
NADNITLAE LEKALFYFYCAKNETDPYPV PEGLFKKLMKRYEELKNDPD AKFYHLHETYDDFSKAYPLNN

Total 36.4kDa