



T0975

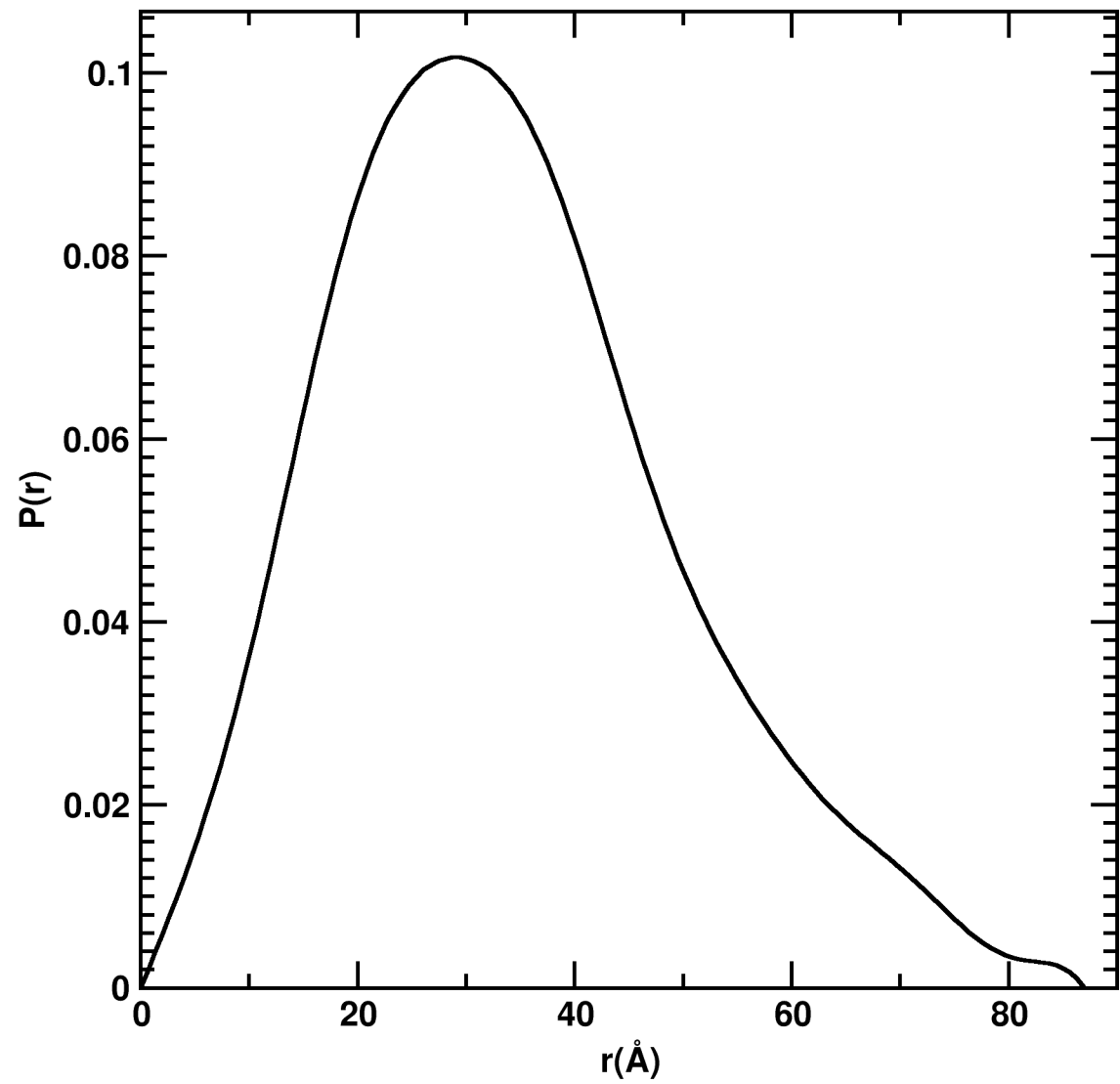
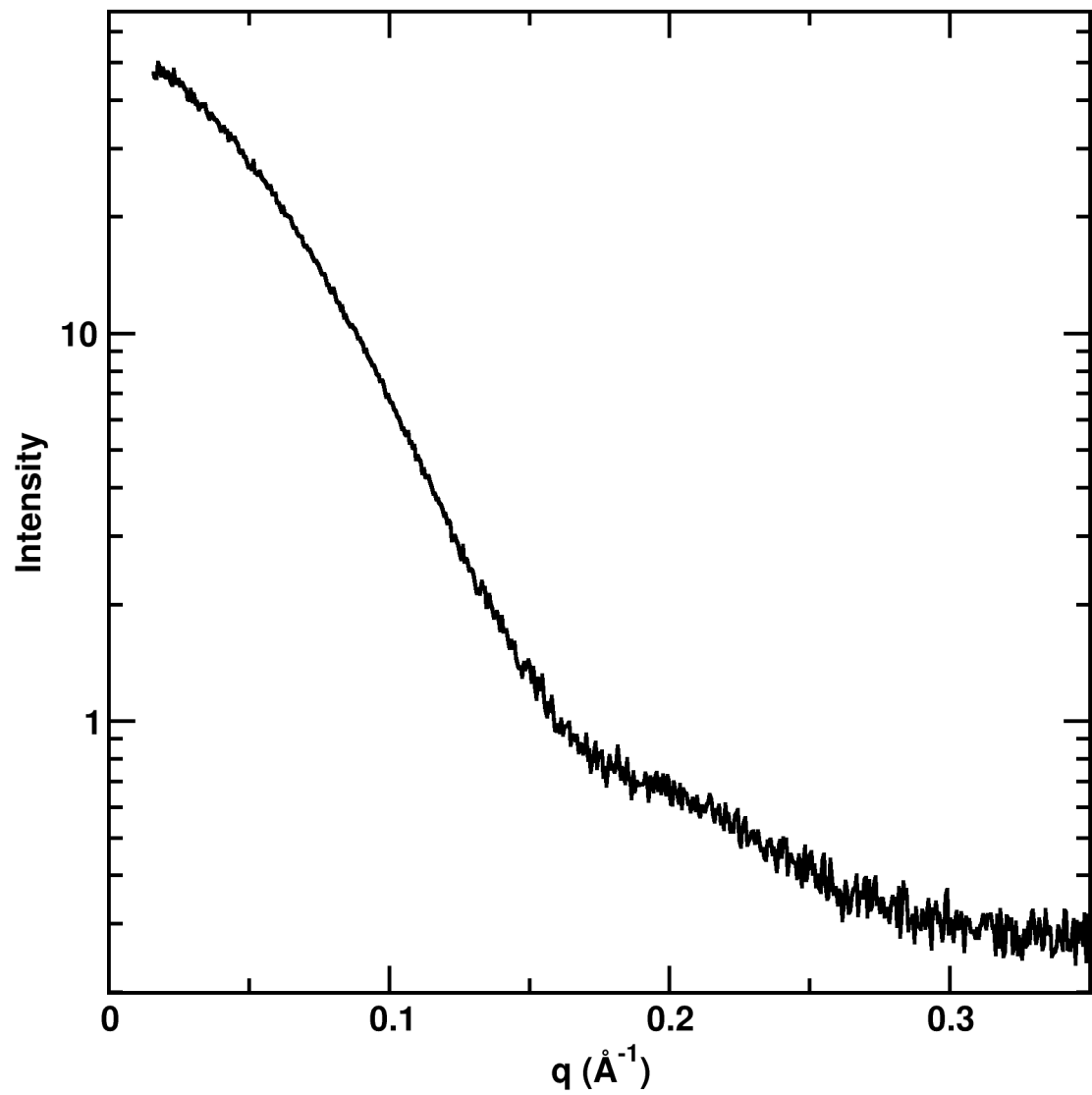
HT and SEC SAXS are good quality. However some concentration dependence observed. Max dimension difficult to assign.



Protein has iron sulfur cluster. First 30aa predicted unfolded

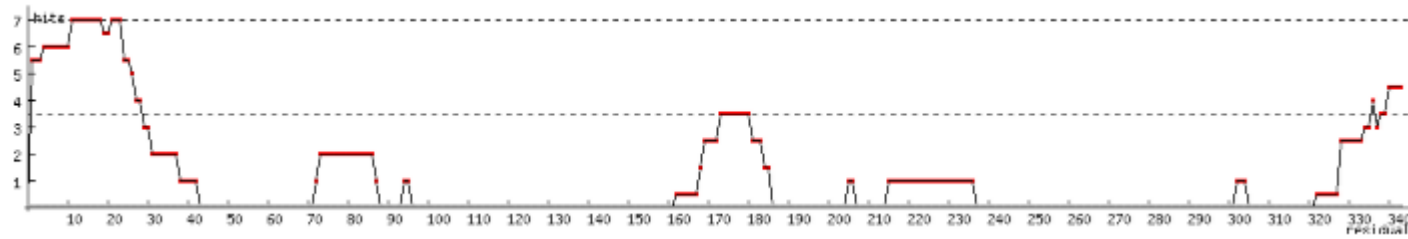
Sample: T0975			
Variable	Value	Error +/-	Units
Rg	27.8	1	Angstroms
Porod Exponent	4.0		Scale (2-4)
Mass SAXS	39	5	kDa
Max Dimension	89 - 105	3	Angstroms
Radius of Cross Section	17.6	1	Angstroms
Volume	82000	5,000	Cubic Angstroms
Real Space Rg	26.27	3	Angstroms

LEDAQESKALVNMPGPSSSESLGKDDKPISLQNWKRGLDILSPMERFHLKYLYVTDLATQNWCELQTAYGKELPGFL
APEKAAVLDTGASIHARELELHDLVTVPVTTKEDAWAIKFLNILLIPTLQSEGHIREFPVFGE GEGVLLVGVIDELHY
TAKGELELAELKTRRRPMLPLEAQKKKDCFQVS LYKYIFDAMVQGKVTPASLIHHTKLCLEKPLGPSVLRHAQQGGF
SVKSLGDLMELVFLSLTLSDLPVIDILKIEYIHQETATVLGTEIVAFKEKEVRAKVQH YMAYWMGHREPQGV DVEEAW
KCRTCTYADICEWRKGSGVLSSTLAPQVKKAK – 38.5

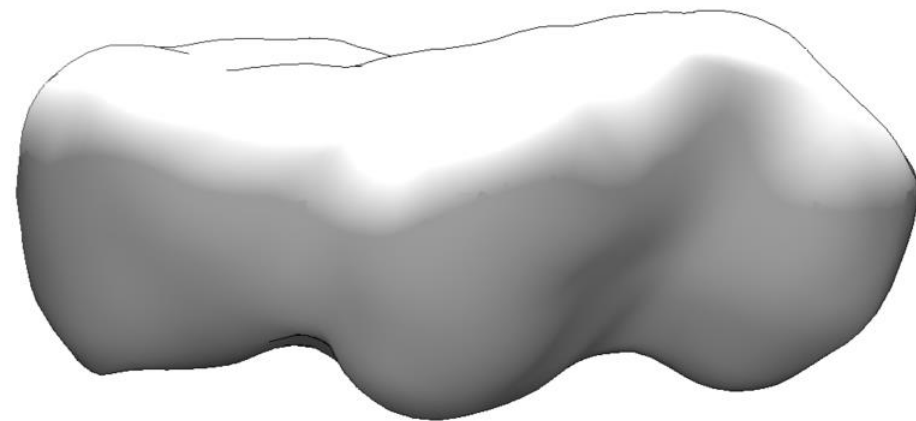
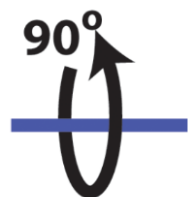
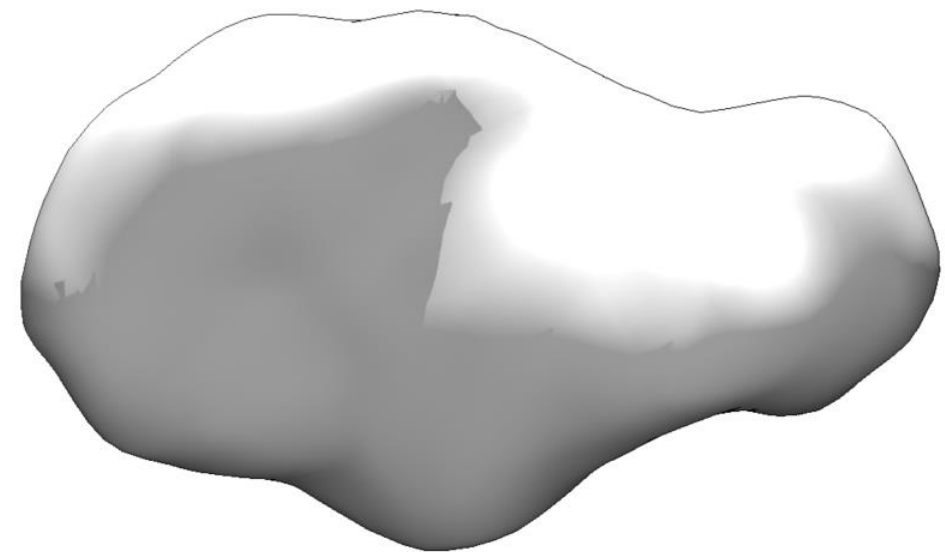


Disordered

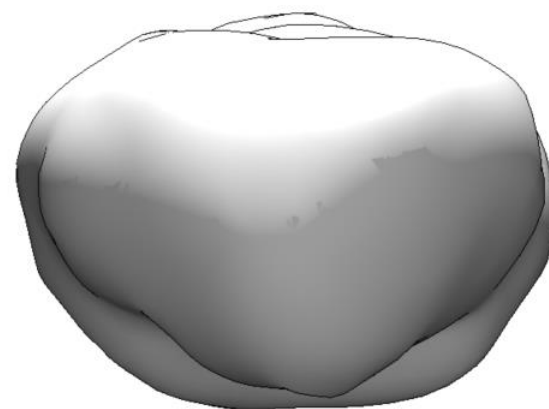
Ordered



Predicted to be fairly ordered aside from the first 30aa



Average: NSD 1.165



Quality Parameter		Value	Expected
Multiple Concentrations in HT	Yes	3	3
SEC-SAXS	Yes		
Rg Real and Reciprical Agree	Yes		
Dmax easy to define	No		
Low Flexibility	Yes	4.0	
Mass multiple of monomer	Yes	39	38.5
Linear Guinier	Yes		

LEDAQESKALVNMPGPSSESLGKDDKPISLQNWKRGLDILSPMERFHLKYLYVTDLATQNWCELQTAYGKELPGFL
APEKAAVLDTGASIHARELELHDLVTPVTTKEDAWAIKFLNILLIPTLQSEGHIREFPVFGE GEGVLLVGVIDELHY
TAKGELELAELKTRRRPMLPLEAQKKKDCFQVSLYKYIFDAMVQGKVTPASLIHHTKLCLEKPLGPSVLRHAQQGGF
SVKSLGDLMEVLFLSLTSLDLPVIDILKIEYIHQETATVLGTEIVAFKEKEVRAKVQHMYMAYWMGHPQGGVDVEEAW
KCRTCTYADICEWRKGSGVLSSTLAPQVKKAK – 38.5